

2. Buch

A Preludium

Tobias Hume
(1569 - 1645)

The musical score for 'A Preludium' consists of five staves of bass clef notation in common time. The piece begins with a treble clef-like note on the first staff, followed by a series of eighth and sixteenth notes. The second staff features a prominent sixteenth-note pattern. The third staff continues with similar rhythmic motifs, including some triplets. The fourth staff shows a more melodic line with some rests. The fifth staff concludes the piece with a final cadence.

Be merry a day will come

The musical score for 'Be merry a day will come' consists of two staves of bass clef notation in common time. The first staff begins with a treble clef-like note and contains several measures of eighth and sixteenth notes. The second staff continues the melody, ending with a final cadence.

A Wanton humor

Two staves of musical notation in bass clef, common time (C). The first staff contains a melodic line with several measures, including a measure with a 'V' marking above it. The second staff contains a bass line with several measures, including two measures with 'V' markings above them. Both staves end with a double bar line and repeat dots.

The second part

Three staves of musical notation in bass clef, 3/4 time. The first staff contains a melodic line with several measures. The second staff contains a bass line with several measures, including a measure with a 'V' marking above it. The third staff contains a bass line with several measures, including a measure with a 'V' marking above it. All staves end with a double bar line and repeat dots.

A Caveleiros Humor

One staff of musical notation in bass clef, common time (C). The staff contains a melodic line with several measures, including two measures with 'V' markings above them. The staff ends with a double bar line and repeat dots.

The new Knights Humor

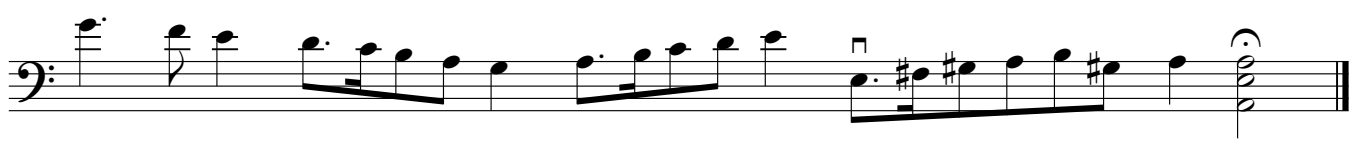
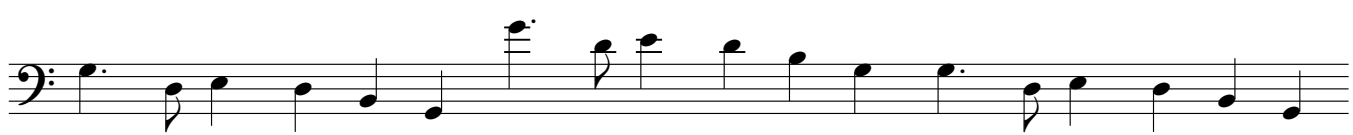
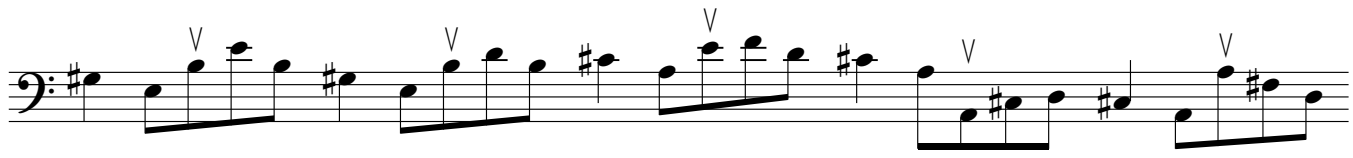
Three staves of musical notation in bass clef, common time (C). The first staff begins with a treble clef and a common time signature. The music features a mix of eighth and sixteenth notes, with some chords and accidentals (sharps and flats). The second staff continues the melody with similar rhythmic patterns. The third staff concludes the piece with a double bar line and repeat dots.

My Mistresse humor when she hath

Two staves of musical notation in bass clef, common time (C). The first staff contains a melodic line with eighth and sixteenth notes. The second staff continues the melody, featuring a trill-like figure and ending with a double bar line and repeat dots.

A Galliard

One staff of musical notation in bass clef, 3/4 time. The piece is characterized by a rhythmic pattern of eighth and sixteenth notes, typical of a galliard. It ends with a double bar line and repeat dots.



Tom and Mistressse Fine

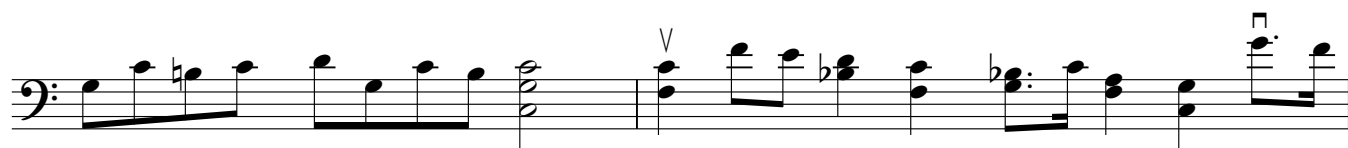
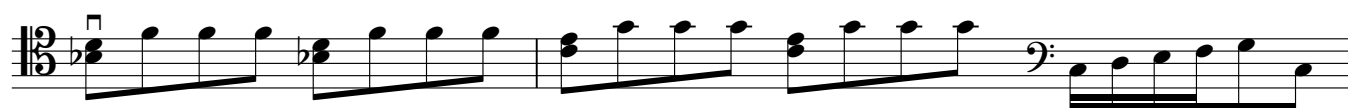
Musical score for 'Tom and Mistressse Fine' in bass clef, common time. The piece consists of six staves of music. The first staff begins with a common time signature and a key signature of one flat. The music features a mix of eighth and sixteenth notes, often beamed together. There are several repeat signs (double bar lines with dots) throughout the piece. The second staff has a repeat sign at the beginning. The third staff ends with a double bar line and repeat dots. The fourth staff begins with a repeat sign. The fifth staff ends with a double bar line and repeat dots. The sixth staff ends with a double bar line and repeat dots.

Tickle me quickly

Musical score for 'Tickle me quickly' in bass clef, common time. The piece consists of three staves of music. The first staff begins with a common time signature and a key signature of one sharp. The music is characterized by rapid sixteenth-note passages. There are repeat signs and a 'V' (trill) marking. The second staff has a repeat sign at the beginning. The third staff begins with a 'V' marking and a repeat sign. The piece concludes with a double bar line and repeat dots.



A Careless Humor



An English Frenchman

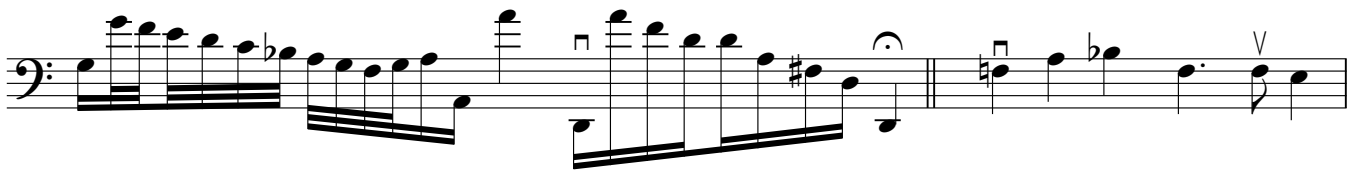


Hit it in the middle



Captaine Humes Galliard





She loves it well

Musical score for "She loves it well" in 3/4 time. The piece consists of two staves. The upper staff is in treble clef and the lower staff is in bass clef. The key signature has one sharp (F#). The melody in the upper staff begins with a quarter note G4, followed by quarter notes A4, B4, and C5. The bass line in the lower staff starts with a quarter note G2, followed by quarter notes A2, B2, and C3. The piece concludes with a double bar line and repeat dots.

A Polish Ayre I

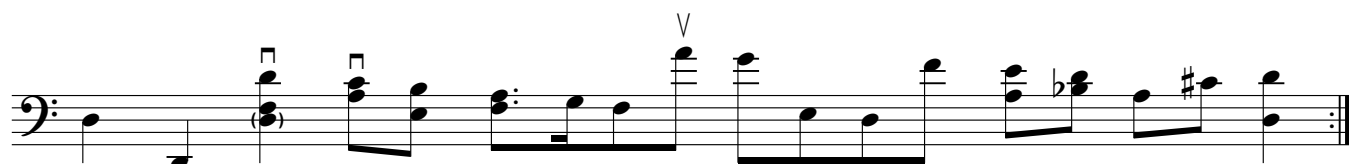
Musical score for "A Polish Ayre I" in 3/4 time. The piece consists of four staves, all in bass clef. The key signature has one sharp (F#). The first staff begins with a quarter note G2, followed by quarter notes A2, B2, and C3. The second staff features a first ending (1.) and a second ending (2.). The third staff continues the melody with quarter notes D3, E3, F3, and G3. The fourth staff concludes the piece with a double bar line and repeat dots. Various ornaments (V) are indicated above certain notes.

A Polish Ayre II

Musical score for "A Polish Ayre II" in 3/4 time. The piece consists of a single staff in bass clef. The key signature has one sharp (F#). The melody begins with a quarter note G2, followed by quarter notes A2, B2, and C3. The piece concludes with a double bar line and repeat dots. An ornament (V) is indicated above a note in the final measure.



A Pollish Ayre III



A Polish Vilanell

Musical score for "A Polish Vilanell" in bass clef, common time. The piece consists of five staves of music. It features various rhythmic patterns, including eighth and sixteenth notes, and rests. There are several dynamic markings, including accents (v) and accents with a fermata (v with a square symbol). The key signature has one sharp (F#). The piece concludes with a first ending (1.) and a second ending (2.).

A Snatch and away

Musical score for "A Snatch and away" in bass clef, common time. The piece consists of four staves of music. It features various rhythmic patterns, including eighth and sixteenth notes, and rests. There are several dynamic markings, including accents (v) and accents with a fermata (v with a square symbol). The key signature has one flat (Bb). The piece concludes with a double bar line.