

# LE DÉPART

OP. 178, No. 1

CHARLES DANCLA  
(1817 - 1907)

Moderato maestoso

*f* *p dolce* *f*

6 *p dolce* *f* **A**

12 *mf*

18 *f* *p cantabile* **B**

24 *cresc.*

30 *p* **C**

36 **D**

41 *f* *mf*

47 E

*f* *p sautillé*

53 *sim.* F

*p*

57 *sim.*

*cresc.* *f* *p*

61 G

*dim.*

66

*f* *p*

72 H

*f* *p*

77 I *rit.* *poco*

*f* *p cresc.*

83 *a* *poco* *a tempo*

*f* *p*

88

*p*

# L'ARRIVÉE

OP. 178, No. 2

Moderato maestoso e cantabile

*f*

*p* **A**

*f*

*mf dolce* **B**

*cresc.*

*f sostenuto* **C**

*mf dolce*

*mf dolce* **D**

*mf dolce*

48

54

**E**

60

**F**

66

71

**G**

77

rit. poco

83

a poco **H** a tempo

88

92

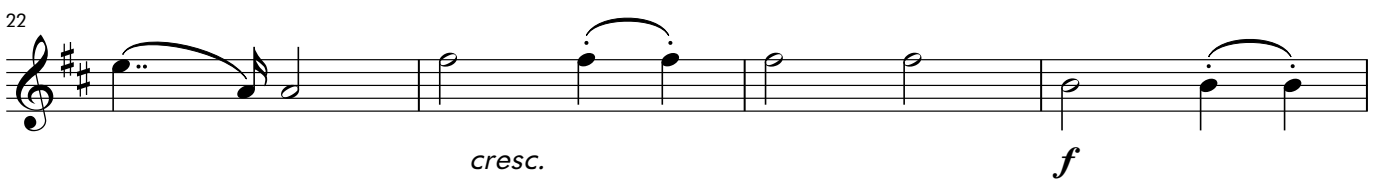
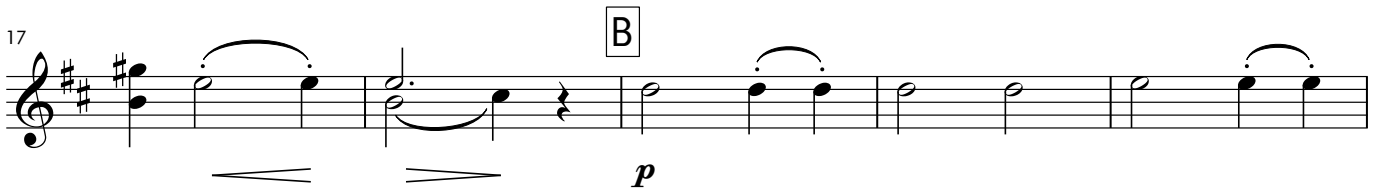
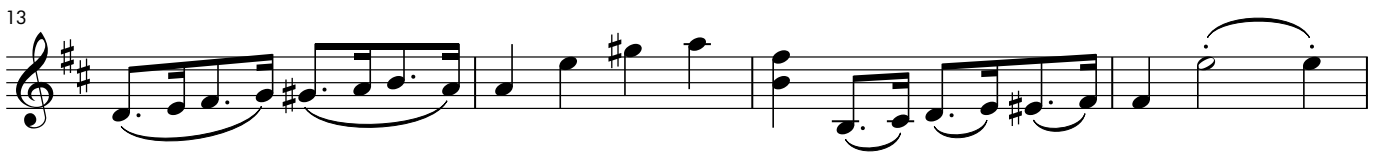
rit. poco a poco

## LE RETOUR

OP. 178, No. 3

MARCHE

Maestoso risoluto



31

*mf* *f*

35

**D**

rit. *p* *f* risoluto a tempo

39

42

**E**

45

49

**F**

*p* *cresc.*

53

*f* rall. 2

8

58

G

a tempo

*mf cantabile*

62

66

H

*cresc.* *p* *sostenuto*

71

*p*

77

*f*

82

J

86

*p*

90

K

*f*

94

98 poco rit. L a tempo  
*p cantabile*

102

107 M  
*cresc. mf*

112 N rall.  
*f mf cantabile*

118 a tempo  
*f*

122

125 O  
*p f*

129

132