

# 1. Buch

## A Merry meeting

Tobias Hume  
(1569 - 1645)

Two staves of musical notation in bass clef, common time (C). The first staff begins with a repeat sign and contains a melody with several accidentals (sharps and naturals). The second staff continues the melody, ending with a repeat sign.

## T Sa ala mod du' france

Three staves of musical notation in bass clef, common time (C). The notation includes various note values and rests, with some notes marked with a square symbol above them. The piece concludes with a fermata over the final note.

## A French Jigge

Three staves of musical notation in bass clef, 3/4 time. The notation includes a 'V' marking above a note in the first staff and another 'V' marking above a note in the third staff. The piece ends with a fermata.

## A Toy for a Gallant

The first part of the piece consists of four staves of music in bass clef, common time. The first staff begins with a dynamic marking of *v* (piano) and contains a sequence of eighth and sixteenth notes. The second staff features a first ending bracket labeled '1.' and a second ending bracket labeled '2.'. The third and fourth staves continue the melodic line with various rhythmic patterns and dynamic markings, including *mf* (mezzo-forte) and *v*.

### The second part

The second part of the piece consists of three staves of music in bass clef, common time. The first staff starts with a dynamic marking of *mf* and includes a *v* marking. The second staff contains a repeat sign and continues the melodic development. The third staff concludes the section with a final note marked with a fermata and a repeat sign.

### The third part

The third part of the piece consists of a single staff of music in bass clef, common time. It begins with a dynamic marking of *v* and features a continuous melodic line of eighth and sixteenth notes.

Two staves of musical notation in bass clef. The first staff contains a sequence of eighth and sixteenth notes, including a triplet of eighth notes. The second staff continues the melody with similar rhythmic patterns and includes a fermata over the final note.

I am glad she is come

Four staves of musical notation in bass clef. The first two staves show a melodic line with eighth and sixteenth notes, including a flat accidental. The last two staves feature a more complex rhythmic pattern with sixteenth-note runs and a fermata at the end.

A Toy

Two staves of musical notation in bass clef. The first staff includes several 'V' markings above notes, indicating vibrato. The second staff continues the melody with eighth and sixteenth notes, ending with a fermata.

# My Mistresse Maske

The image displays a musical score for the piece "My Mistresse Maske". The score is written in bass clef with a common time signature (C). It consists of eight staves of music. The notation includes various note values such as eighth and sixteenth notes, as well as rests and accidentals (sharps and flats). The piece concludes with a double bar line and repeat dots. The overall style is that of a classical or early modern instrumental or vocal line.

## A French Ayre

Musical score for 'A French Ayre' in bass clef, common time. The score consists of five staves of music. The first staff begins with a treble clef and a common time signature. The music features a mix of eighth and sixteenth notes, with some rests. The second staff continues the melody with similar rhythmic patterns. The third staff shows a more complex rhythmic structure with many sixteenth notes. The fourth staff includes some chords and rests. The fifth staff concludes the piece with a final cadence, marked with a double bar line and repeat dots.

## A Souldiers Maske

Musical score for 'A Souldiers Maske' in bass clef, common time. The score consists of two staves of music. The first staff begins with a treble clef and a common time signature. The music features a mix of eighth and sixteenth notes, with some rests. The second staff continues the melody with similar rhythmic patterns, ending with a final cadence marked by a double bar line and repeat dots.

## A Pollish Jigge

Musical score for "A Pollish Jigge" in bass clef, 3/4 time signature. The score consists of three staves. The first staff begins with a treble clef and a 3/4 time signature, followed by a bass clef. The melody is written in a key with one flat (B-flat). The second staff continues the melody with various ornaments, including a mordent and a grace note. The third staff concludes the piece with a final cadence and a double bar line.

## A Galliard I

Musical score for "A Galliard I" in bass clef, 3/4 time signature. The score consists of five staves. The first staff begins with a treble clef and a 3/4 time signature, followed by a bass clef. The melody is written in a key with one flat (B-flat). The second staff continues the melody with various ornaments, including a mordent and a grace note. The third staff continues the melody with various ornaments, including a mordent and a grace note. The fourth staff continues the melody with various ornaments, including a mordent and a grace note. The fifth staff concludes the piece with a final cadence and a double bar line.

### A Galliard II

Musical score for A Galliard II, bass clef, 3/4 time signature. The score consists of five staves of music. The first staff begins with a 'V' above the first note. The second staff begins with a 'V' above the first note. The third staff begins with two 'V's above the first two notes. The fourth staff begins with a 'V' above the first note. The fifth staff begins with a 'V' above the first note. The score includes various rhythmic values such as quarter, eighth, and sixteenth notes, as well as rests and accidentals.

### A Galliard IV

Musical score for A Galliard IV, bass clef, 3/4 time signature. The score consists of four staves of music. The first staff begins with a 'V' above the first note. The second staff begins with a 'V' above the first note. The third staff begins with a 'V' above the first note. The fourth staff begins with a 'V' above the first note. The score includes various rhythmic values such as quarter, eighth, and sixteenth notes, as well as rests and accidentals.

## A Galliard V

Musical score for "A Galliard V" in bass clef, 3/4 time signature. The piece consists of five staves of music. The first staff begins with a treble clef and a 3/4 time signature. The music features a mix of eighth and sixteenth notes, with some rests and accidentals. The second staff contains a repeat sign. The third staff ends with a fermata over the final note. The fourth staff has three 'V' markings above the notes. The fifth staff concludes the piece with a double bar line.

## My Mistresse Almaine

Musical score for "My Mistresse Almaine" in bass clef, common time signature. The piece consists of two staves of music. The first staff begins with a treble clef and a common time signature. The music features a mix of eighth and sixteenth notes, with some rests and accidentals. The second staff concludes the piece with a double bar line.



### Captaine Humes Almayne

Musical score for 'Captaine Humes Almayne' in bass clef, common time. The score consists of three staves. The first staff begins with a treble clef and a common time signature. The melody features a sequence of eighth and sixteenth notes, with a sharp sign on the second measure and a flat sign on the eighth measure. The second staff continues the melodic line with similar rhythmic patterns. The third staff concludes the piece with a final cadence, including a double bar line and repeat dots.

### Loves Almayne

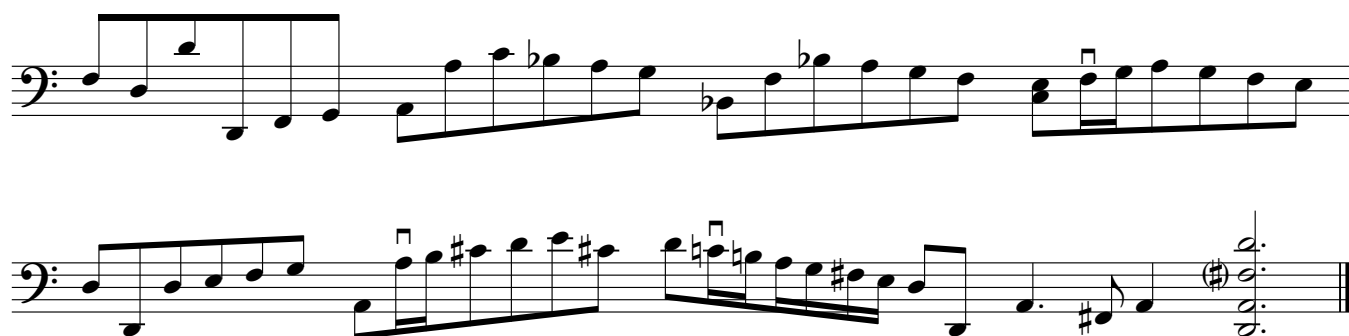
Musical score for 'Loves Almayne' in bass clef, common time. The score consists of four staves. The first staff features a melody with several measures marked with a 'V' above the notes. The second staff continues the melodic line with a series of eighth notes. The third staff shows a more sparse melodic line with some rests. The fourth staff concludes the piece with a final cadence, including a double bar line and repeat dots.

## A Almayne

Musical score for "A Almayne" in bass clef, common time. The piece consists of three staves of music. The first staff begins with a common time signature and a key signature of one sharp (F#). It features a series of eighth and sixteenth notes, with a fermata over the first measure and a 'V' marking above the eighth measure. The second staff continues the melody with a repeat sign after the first measure, followed by a 'V' marking above the first measure. The third staff concludes the piece with a final cadence.

## A Galliard III

Musical score for "A Galliard III" in bass clef, 3/4 time. The piece consists of four staves of music. The first staff begins with a 3/4 time signature and a key signature of one sharp (F#). It features a series of eighth and sixteenth notes, with a fermata over the first measure and a 'V' marking above the eighth measure. The second staff continues the melody with a repeat sign after the first measure, followed by a 'V' marking above the first measure. The third staff concludes the piece with a final cadence. The fourth staff continues the melody with a repeat sign after the first measure, followed by a 'V' marking above the first measure.



## The Spirit of the Almayne

The second system consists of seven staves of musical notation. The top staff begins with a treble clef and a 3/4 time signature. It contains a sequence of eighth and sixteenth notes, including a triplet of eighth notes and two accents (V) over eighth notes. The second staff begins with a bass clef and a key signature of one sharp (F-sharp). It contains a sequence of eighth and sixteenth notes, including a triplet of eighth notes and a slur over a group of notes. The third staff begins with a bass clef and a key signature of one sharp (F-sharp). It contains a sequence of eighth and sixteenth notes, including a triplet of eighth notes. The fourth staff begins with a bass clef and a common time signature (C). It contains a sequence of eighth and sixteenth notes, including a triplet of eighth notes and an accent (V) over a group of notes. The fifth staff begins with a bass clef and a key signature of one sharp (F-sharp). It contains a sequence of eighth and sixteenth notes, including a triplet of eighth notes. The sixth staff begins with a bass clef and a key signature of one sharp (F-sharp). It contains a sequence of eighth and sixteenth notes, including a triplet of eighth notes. The seventh staff begins with a bass clef and a key signature of one sharp (F-sharp). It contains a sequence of eighth and sixteenth notes, including a triplet of eighth notes. The system concludes with a double bar line and a key signature change to one sharp (F-sharp).

## Maister Crasse his Almayne

Three staves of musical notation in bass clef, common time (C). The first staff begins with a treble clef and a common time signature. The music consists of eighth and sixteenth notes, with some accidentals (sharps and naturals). The second staff includes a 'V' marking above a note. The third staff concludes with a double bar line and a fermata over the final note.

## A Toy

Two staves of musical notation in bass clef, common time (C). The first staff features a series of eighth notes with some accidentals. The second staff includes two 'V' markings above notes and ends with a double bar line and a fermata.

## Ha Couragie

Two staves of musical notation in bass clef, common time (C). The first staff starts with a treble clef and a common time signature. The music is composed of eighth and sixteenth notes with various accidentals. The second staff concludes with a double bar line and a fermata.

## The Lord Beccus Almayne

Musical score for 'The Lord Beccus Almayne' in bass clef, common time. The piece consists of three staves of music. The first staff begins with a fermata over the first note. The second staff contains a repeat sign. The key signature has one flat (B-flat).

## A Jigge

Musical score for 'A Jigge' in bass clef, 3/4 time. The piece consists of four staves of music. The first staff begins with a fermata over the first note. The second staff begins with a sharp sign. The third staff begins with a fermata over the first note. The fourth staff begins with a fermata over the first note and a 'V' marking above the first measure. The key signature has one sharp (F-sharp).