

Suite 1 in g - moll

Rondeau

Anonymus
(entstanden ca. 1700-1740)

The musical score for 'Rondeau' in G minor, 3/2 time signature, consists of ten staves of music. The first staff begins with a treble clef, a key signature of one flat (B-flat), and a 3/2 time signature. The music is written in a single melodic line. The score includes various rhythmic values such as quarter, eighth, and sixteenth notes, as well as rests and accidentals. A repeat sign with first and second endings is present in the second staff. A fermata is placed over a note in the third staff. A trill-like ornament is marked with a circled 'h' in the sixth staff. The piece concludes with a final cadence in the tenth staff.

The first section of the music consists of three staves. The first staff contains a melodic line with eighth and sixteenth notes. The second staff features a bass line with some rests and eighth notes. The third staff continues the melodic line, including several triplet markings (indicated by a '3' below the notes) and ending with a double bar line and repeat dots.

Giga

The 'Giga' section is written in 6/8 time and consists of nine staves. The first staff begins with a treble clef and a key signature of one flat. The music is characterized by a steady eighth-note rhythm. The second staff includes a repeat sign (double bar line with dots) and a first ending bracket. The subsequent staves continue the melodic development with various accidentals and rhythmic patterns. The final staff concludes with a double bar line and repeat dots.

Minuetto

The musical score for 'Minuetto' is written in 3/4 time and consists of six staves. The key signature has one flat (B-flat). The first staff begins with a treble clef and a key signature of one flat. The music features a mix of eighth and sixteenth notes, often beamed together. There are several ornaments (marked with a '+') and slurs throughout. A repeat sign with first and second endings is present in the second staff. The piece concludes with a double bar line and repeat dots.

Suite 2 in C

Rondeau

The musical score for 'Rondeau' is written in 6/8 time and consists of four staves. The key signature is C major. The first staff begins with a treble clef and a key signature of C major. The music is characterized by a steady eighth-note accompaniment with a more melodic line on top. There are several ornaments (marked with a '+') and slurs. The piece concludes with a double bar line and repeat dots.

This section contains six staves of musical notation in 3/4 time. The notation includes various rhythmic patterns such as eighth and sixteenth notes, often beamed together. There are several instances of slurs and accents (marked with a '+'). The key signature changes from C major to B-flat major in the fourth staff, indicated by a flat sign on the first line. The piece concludes with a double bar line.

Minuetto I

This section contains three staves of musical notation for 'Minuetto I' in 3/4 time. The melody is simple and consists of quarter and eighth notes. There are several accents (marked with a '+') placed above specific notes. The piece ends with a double bar line.

Double

Musical score for 'Double' in 3/4 time. The score consists of four staves of music. The first staff begins with a treble clef and a key signature of one flat (Bb). The melody features eighth notes and quarter notes, with three triplet markings (indicated by a '3' above the notes) and an accent mark (+) above a quarter note. The second staff continues the melody with more triplet markings and ends with a repeat sign. The third staff features a double bar line with repeat dots, followed by triplet markings and an accent mark. The fourth staff continues with triplet markings and ends with a repeat sign.

Minuetto II

Musical score for 'Minuetto II' in 3/4 time. The score consists of three staves of music. The first staff begins with a treble clef and a key signature of two flats (Bb, Eb). The melody is primarily composed of eighth notes. The second staff features a repeat sign and continues the eighth-note melody. The third staff concludes the piece with a final note and a repeat sign.

Double

Musical score for 'Double' in 3/4 time. The score consists of one staff of music. It begins with a treble clef and a key signature of two flats (Bb, Eb). The melody features eighth notes and quarter notes, with two triplet markings (indicated by a '3' above the notes) and a flat symbol (b) below a quarter note.

Musical staff in bass clef with a key signature of one flat. It features four groups of triplets of eighth notes, followed by a quarter note with a fermata.

Musical staff in bass clef with a key signature of one flat. It features four groups of triplets of eighth notes, followed by a quarter note with an accent mark (+) and a fermata.

Musical staff in bass clef with a key signature of one flat. It features four groups of triplets of eighth notes, followed by a quarter note with a fermata.

Scherzo I

Presto

Musical staff in bass clef with a key signature of one flat and a 2/4 time signature. It contains a series of eighth notes with accents, ending with a fermata.

Musical staff in bass clef with a key signature of one flat and a 2/4 time signature. It contains a series of eighth notes with accents, ending with a fermata.

Scherzo II

Musical staff in bass clef with a key signature of one flat and a 2/4 time signature. It contains a series of eighth notes with accents, ending with a fermata.

Musical staff in bass clef with a key signature of one flat and a 2/4 time signature. It contains a series of eighth notes with accents, ending with a fermata.

Musical staff in bass clef with a key signature of one flat and a 2/4 time signature. It contains a series of eighth notes with accents, ending with a fermata.

Da capo Scherzo I

Minuetto

The musical score for "Minuetto" on page 8 is written in 3/4 time. It consists of ten staves of music, primarily in bass clef. The notation includes various rhythmic patterns, such as eighth and sixteenth notes, and includes dynamic markings like "+" and "p". The piece concludes with a double bar line.

Suite 3 in d - moll

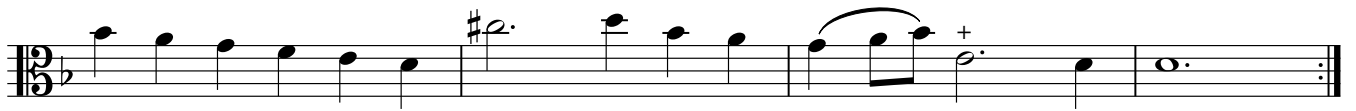
Inventione

This page contains the musical score for the ninth measure of the 'Inventione' from Suite 3 in d minor. The score is written in bass clef with a 3/4 time signature and a key signature of one flat (B-flat). It consists of eight staves of music. The notation includes quarter notes, eighth notes, and sixteenth notes, with various accidentals (sharps, flats, naturals) and phrasing slurs. The piece concludes with a double bar line and repeat dots.

Fantasia

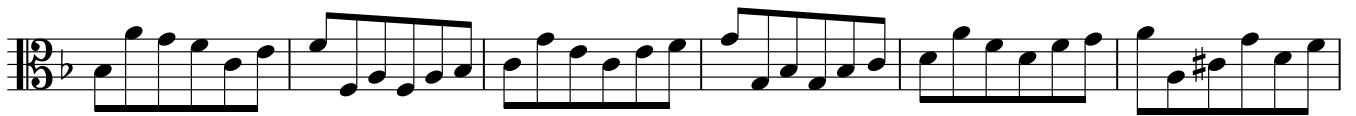
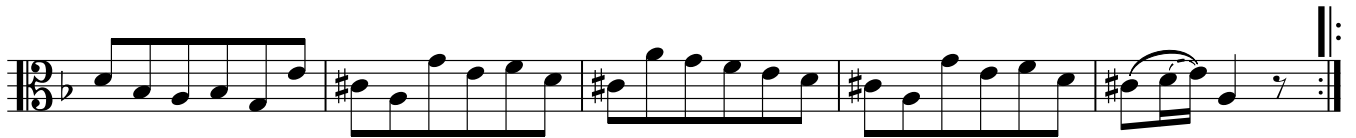
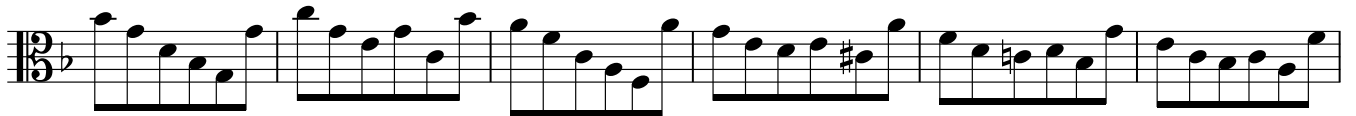
Vivace

The musical score for 'Fantasia' is written in a single system with ten staves. The key signature is one flat (B-flat), and the time signature is 3/2. The tempo is marked 'Vivace'. The music consists of a series of eighth and quarter notes, with some slurs and accents. The system ends with a double bar line and repeat dots.



Capricio

Allegro



* In der Abschrift von 1740 ist dieser Ton ein f.

Concerto

Vivace

First musical staff in 3/4 time, featuring a bass clef and a key signature of one flat. The melody consists of eighth notes and quarter notes, with a fermata over the second measure.

Second musical staff, continuing the melody with eighth notes and quarter notes, including a fermata over the second measure.

Third musical staff, continuing the melody with eighth notes and quarter notes, including a fermata over the second measure.

Fourth musical staff, continuing the melody with eighth notes and quarter notes, including a fermata over the second measure.

Fifth musical staff, continuing the melody with eighth notes and quarter notes, including a fermata over the second measure.

Sixth musical staff, continuing the melody with eighth notes and quarter notes, including a fermata over the second measure and a triplet of eighth notes in the fifth measure.

Seventh musical staff, continuing the melody with eighth notes and quarter notes, including a fermata over the second measure.

Eighth musical staff, continuing the melody with eighth notes and quarter notes, including a fermata over the second measure.

This page contains ten staves of musical notation for a 13-measure piece. The music is written in 3/8 time with a key signature of one flat (B-flat). The notation includes various rhythmic patterns such as eighth and sixteenth notes, rests, and slurs. A sharp sign (#) appears above a note in the second measure of the first staff. A plus sign (+) is placed above a note in the fourth measure of the fifth staff. The piece concludes with a final note in the thirteenth measure, marked with a fermata.

Inventione

Allegro

The musical score for 'Inventione' is written in 3/4 time and consists of two staves. The key signature has one flat (B-flat). The piece begins with a treble clef and a 3/4 time signature. The first staff contains the first six measures, featuring a melodic line with slurs and a repeat sign at the end. The second staff continues the piece, including a double bar line with repeat dots and a fermata over a note in the final measure. The notation includes various rhythmic values, slurs, and accents.

Capricio

Allegro

The musical score for 'Capricio' is written in 4/4 time and consists of a single staff. The key signature has one flat (B-flat). The piece begins with a treble clef and a 4/4 time signature. The notation is characterized by a complex rhythmic pattern of sixteenth notes, with slurs and accents throughout.

*Wie im Takt 23 dieses Satzes könnte auch hier ein Vorschlag gespielt werden.

