

3. Stimme

Super flumina Babylonis

Orlando di Lasso

(1532-1594)

Bearbeitung: Christofer Varner

♩ = ca. 80

Solo

Musical notation for measures 1-5 of the 3rd voice part. The key signature is three flats (B-flat, E-flat, A-flat) and the time signature is common time (C). The notation includes a half note, followed by quarter notes, eighth notes, and sixteenth notes, with various slurs and accents.

6

Musical notation for measures 6-7 of the 3rd voice part. Measure 6 contains a whole rest. Measure 7 begins with a quarter rest, followed by quarter notes, eighth notes, and sixteenth notes.

12

Musical notation for measures 12-13 of the 3rd voice part. Measure 12 starts with a half note, followed by quarter notes and eighth notes. Measure 13 continues with quarter notes and eighth notes.

18

Musical notation for measures 18-19 of the 3rd voice part. Measure 18 begins with a half note, followed by quarter notes and eighth notes. Measure 19 continues with quarter notes and eighth notes.

24

Musical notation for measures 24-25 of the 3rd voice part. Measure 24 starts with a half note, followed by quarter notes and eighth notes. Measure 25 continues with quarter notes and eighth notes.

30

Musical notation for measures 30-31 of the 3rd voice part. Measure 30 begins with a half note, followed by quarter notes and eighth notes. Measure 31 continues with quarter notes and eighth notes.

36

Musical notation for measures 36-37 of the 3rd voice part. Measure 36 starts with a half note, followed by quarter notes and eighth notes. Measure 37 continues with quarter notes and eighth notes.

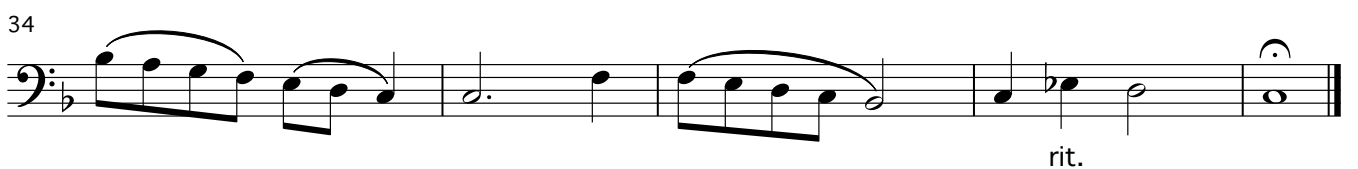
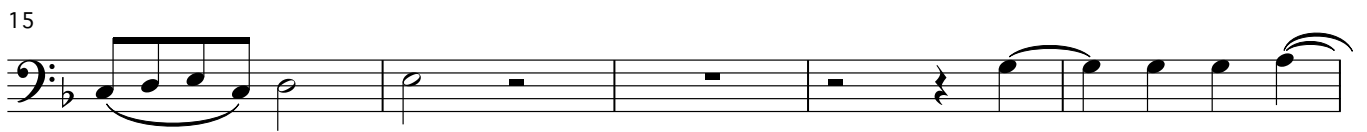
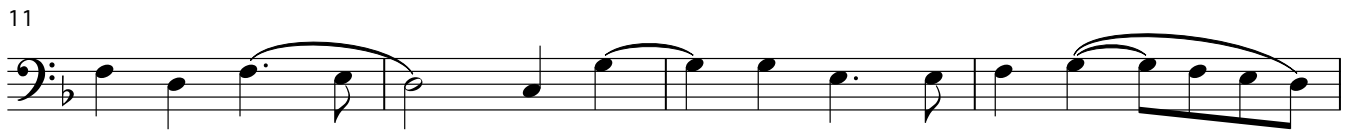
40

Musical notation for measures 40-41 of the 3rd voice part. Measure 40 begins with a half note, followed by quarter notes and eighth notes. Measure 41 continues with quarter notes and eighth notes, ending with a double bar line.

rall. rit.

Factus est Dominus firmamentum meum

♩ = ca. 92



Gressus meos dirige

♩ = ca.104

4

9

14

20

26

31

36

rit.