

LE DÉPART

OP. 178, No. 1

CHARLES DANCLA
(1817 - 1907)

Moderato maestoso

f *p* *f* *pizz.* *arco*

6 *pizz.* *arco* **A** *p* *f*

12 *p*

18 *f* *p cantabile* **B**

24 *cresc.* *p* **C** 2

32

37 **D**

42 *f* *mf* 2

48 E

f *p sautillé*

53 F

sim. *p*

57

sim. *cresc.* *f* *p dolce*

61 G

dim.

67

f *p pizz.*

73 H arco

f *p* *f*

78 I rit. poco

p *cresc.*

83 a poco a tempo

f *molto marcato*

88

L'ARRIVÉE

OP. 178, No. 2

Moderato maestoso e cantabile

f

p

f

mf dolce

cresc.

f sostenuto

mf

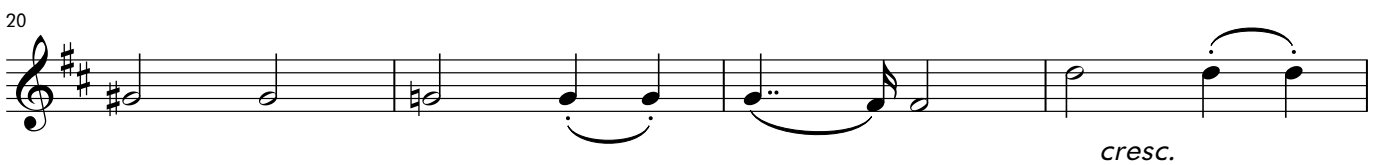
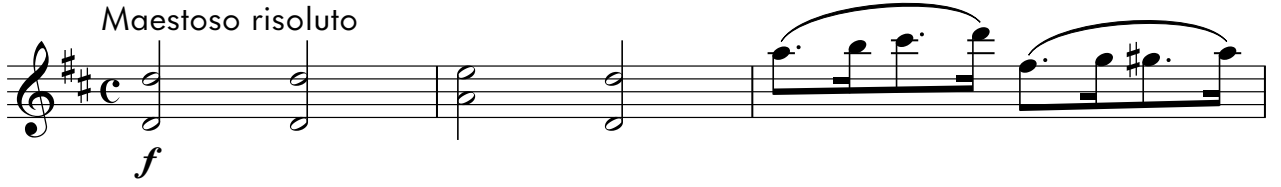
mf

LE RETOUR

OP. 178, No. 3

MARCHE

Maestoso risoluto



28

mf

32

D

f *mf* rit.

37

cantabile *f risoluto* a tempo

40

E

43

46

49

F

p *cresc.*

53

f rall. 2

8
58 **G** a tempo
mf cantabile

63 **H**
cresc.

68
p *sostenuto*

75 **I**
f

80

84 **J**

88
p *p* *tr*

92 **K** *sim.*
f

96 poco rit. L a tempo *p*

101

106 M *cresc.*

111 *mf* N *f*

116 *p* rall. *f* a tempo

121

126 O *p* *f*

129

132