

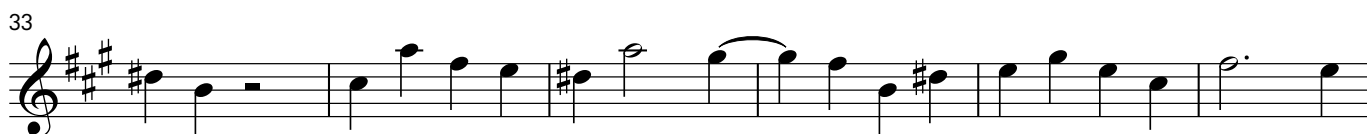
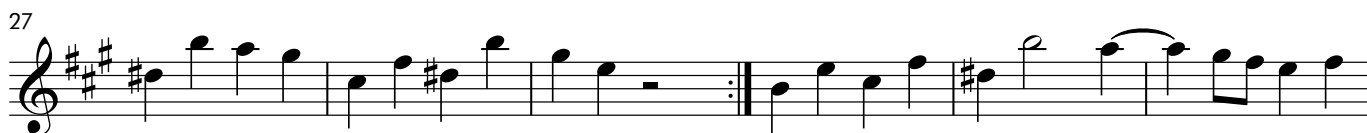
DUO NR. 1 IN A - DUR

OPUS 33 NR. 1

CHARLES DANCLA
(1817 - 1907)

Maestoso

f sempre



45

50

55

60

Menuetto - Moderato

7

14

21

27

33 Trio

mp dolce

39

f

45

mp dolce

51 Menuetto D.C. al Fine

mp dolce

Allegretto

p f p

p

p

p

First musical staff in treble clef with a key signature of three sharps (F#, C#, G#). The melody consists of eighth and quarter notes with slurs. Dynamics include *cresc.* and *f*.

Second musical staff in treble clef with a key signature of three sharps. The melody continues with quarter and eighth notes, ending with a double bar line.

Third musical staff in treble clef with a key signature of three sharps. The melody features slurs and dynamics of *mf* and *f*.

Fourth musical staff in treble clef with a key signature of three sharps. The melody includes slurs and dynamics of *f* and *mf*.

Fifth musical staff in treble clef with a key signature of three sharps. The melody includes slurs and a dynamic of *mf* at the end.

Sixth musical staff in treble clef with a key signature of three sharps. The melody includes slurs and a dynamic of *mf* at the end.

Seventh musical staff in treble clef with a key signature of three sharps. The melody includes slurs and dynamics of *mf* and *f*.

Eighth musical staff in treble clef with a key signature of three sharps. The melody includes slurs and dynamics of *cresc.* and *f*.

Ninth musical staff in treble clef with a key signature of three sharps. The melody includes slurs and dynamics of *cresc.* and *f*, ending with a double bar line.